



**Welcome to Potter 4-H!!**

**Clover Chronicle**

**DECEMBER**



---

# MERRY CHRISTMAS

*From the Potter County Extension Staff*

---

*office closures*

**DECEMBER 23RD-26TH**

TEXAS A&M  
**AGRI**LIFE  
EXTENSION



**Potter 4-H Remind**  
Text @potter4h  
to 81010

Click here to ensure we have your correct email!!

**Connect with us**



Texas 4-H and Potter County 4-H is a club for kids in 3rd – 12th grade, with programs for K-2 (Clover Kids). From food science and outdoor education to fashion design and livestock, there's a 4-H activity for everyone. Join a club listed below to start making friends, learn new skills, and be a better you!

Enrollment is through the 4-H Online website, link is below.

Enrollment starts September 1.

**Fees are \$25 until Oct. 31 and \$30 after.**

Volunteers and Parents are encouraged to join as well.

Volunteer enrollment is \$10.

If you have any questions please call the Potter 4-H office. 806.373.0713



[ENROLL HERE](#)

[Re-Enrollment Instructions](#)

[New Enrollment Instructions](#)

[Potter 4-H Family Handbook](#)

[Important Announcements](#)

# **LETTERS OF SUPPORT**

If your child needs a *Letter of Support* for a non 4-H activity that relates to 4-H projects sent to their school for a non 4-H sanctioned event, **email the office 2 WEEKS before the event.**



Email to:  
Cari.Snider@ag.tamu.edu  
&  
Stephanie.Swindell@ag.tamu.edu



Email Cari

Email Stephanie

**Upcoming in Potter County  
& District 1**



Dress as your favorite Christmas movie character!

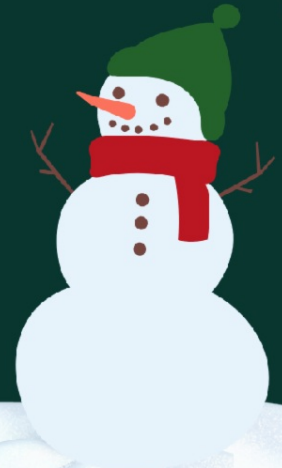
POTTER 4-H  
**CHRISTMAS  
PARTY**

**15  
DECEMBER**

**6PM-8PM**

TOMMY & SUE BEZNER'S HOME  
6001 QUAIL SPRING TRL  
AMARILLO, TX 79119

We will be decorating  
cookies, playing BINGO  
& other games



Bring gift cards to chain restaurants, gas stations, or  
Walmart/Target/HEB for a local family.





# District 1 4-H Winter Social

Ice Skating | Games | Hot Chocolate Bar

January 8th 2:00-5:00 PM @  
Amarillo Ice Ranch  
301 S Grant St, Suite A

\$5 Registration



Register by January 4th on 4-H Online

1/1

[Register on 4-H Online](#)

## Livestock

PCJLA



# PCJLA



POTTER COUNTY JUNIOR LIVESTOCK ASSOCIATION

## MEETING DATES

**December 12**

**January 9**

**Each exhibitor is REQUIRED to attend 2 meetings  
OR  
1 meeting and help at the jackpot**

2nd Monday of each month at 7:00PM  
@ Potter County Extension Office



# PCJLA



POTTER COUNTY JUNIOR LIVESTOCK ASSOCIATION

## RAFFLE TICKETS

PCJLA Raffle tickets are available for 4-H and FFA participants to pick-up at the Potter County Extension office.

Exhibitors will be give 1 booklet to start.

Exhibitors are required to sell \$200 worth (1 booklet) of tickets.

Money (and if any tickets are left) are due by weigh-in.



# CLUB CORNER

Blue Ribbon 4-H Club

**POTTER COUNTY**

***BLUE RIBBON 4-H***



Every month on the 2nd Monday at 6:00PM  
@ Potter County Extension office



**December 12**

Check Facebook, Instagram and the Remind app for information about anything upcoming.

Blue Ribbon 4-H Club Remind Texts!  
Text **@br4hclub** to **81010**

Visit our Blue Ribbon Facebook  
Page

Rawhide Horse 4-H Club



POTTER COUNTY 4-H

# RAWHIDE HORSE CLUB



FIRST TUESDAY OF EACH MONTH @ 6:30PM  
AT THE POTTER COUNTY EXTENSION OFFICE

# DECEMBER 6



Visit our Rawhide Facebook  
Page

Lone Star Rabbit 4-H Club

# Lone Star Rabbit Club

Every month on the 2nd Thursday  
6:30PM  
at the Potter County Extension office

## December 8



Visit the Lone Star Rabbit Facebook  
Page

Potter 4-H Paper Punchers

**POTTER COUNTY 4-H**  
**PAPER PUNCHERS**



**CLUB MEETING DATES**  
EVERY THURSDAY @ 6PM



*Amarillo Rifle and Pistol Club*  
7458 N. Western St.  
Amarillo, Texas 79124

**January:**  
**5, 12, 19, 26**

**February:**  
**2, 9, 16, 23**

**March:**  
**2, 9, 16, 23, 30**

**April:**  
**6, 13, 20, 27**

**May:**  
**4, 11, 18, 25**



**No meetings until January!**

Look for correspondence from Sarah in the fall.

Sarah Cummings- Paper Punchers

**Email**

Paper Punchers Facebook

# Project News

Photography Project



# POTTER PHOTOGRAPHY

Every month on the last Thursday @ 6:00  
at the Potter Extension Office

MEETINGS WILL  
RESUME AFTER  
THE HOLIDAYS

.....  
[www.facebook.com/Potter4HPhotography](http://www.facebook.com/Potter4HPhotography)



Nikki Hsu- Club leader

Email

Visit the Photography Project Facebook  
Page

**Clover Kids**



# CLOVER KIDS

Last Tuesday of each month @ 5:30PM  
at Potter County Extension Office  
3301 SE 10th  
Amarillo, TX 79104

## December 13

Meeting dates are possible to change due to holidays.

Please watch your emails!



If you have questions regarding Clover Kids, please contact the office @ (806) 373-0713 or email Colleen

Email Colleen

## Shooting Sports

### Shotgun

# POTTER COUNTY 4-H SHOTGUN MEETINGS



**Every Wednesday @ 4 PM**

@ the Bezner's  
6001 Quail Springs Trl  
Amarillo, TX 79119

**MEETINGS WILL  
RESUME AFTER THE  
HOLIDAYS**

**Contact Tommy Bezner if interested!  
tomsuebezner@aol.com**

Tommy Bezner- Shotgun Coach

Email

Cari Snider-CEA

Email

---

## Archery

Meetings are to be determined.  
Please watch your email for more information.

Michael Hsu- Archery

Email

Cari Snider-CEA

Email

---

## Vet Science

Potter County  
**Vet Science**

**Group 1**

2nd Monday of each month @ 4:30 PM  
@ Potter County Extension office

**December 12 @ 4:30 PM**

**January 9 @ 4:30 PM**

**Group 2**

1st Monday of each month @ 5:30 PM  
@ Potter County Extension office

**December 5 @ 5:30 PM**

**January 2 @ 5:30 PM**

**Group 3**

2nd Monday of each month @ 6:00 PM  
@ Potter County Extension office

**December 12 @ 6:00 PM**

**January 9 @ 6:00 PM**



Megan Eikner

**Email**

**Community Service  
Opportunity**

BRING YOUR CHANGE TO  
THE POTTER COUNTY EXTENSION OFFICE!

# SPARE CHANGE FOR POSITIVE CHANGE



The vet science club is collecting spare change to sponsor animals at Dove Creek Equine Rescue and help with the care of animals at the P.E.T.S clinic.



## Upcoming Opportunities



# FORT ELLIOTT FFA ALUMNI LAMB AND GOAT JACKPOT

**WHEELER COUNTY AG BARN  
SATURDAY, DECEMBER 3RD**

BARN OPENS @ 7AM

GOAT WEIGHT CARDS DUE 9AM

SHOW @ 10AM

LAMB WEIGHT CARDS DUE 10AM

LAMB SHOW FOLLOWING GOATS



**JUDGE: TY GILLESPIE**

**BUCKLES &  
PRIZES  
PRESENTED TO  
GRAND &  
RESERVE GRAND**

\$25.00 PER ANIMAL

**CASH ONLY**

\$5.00 SHOWMANSHIP

PEEWEE/JR/SR

**WINNER TAKE ALL**

## **HEALTH PAPERS REQUIRED**

HERE IS THE LINK FOR MORE INFORMATION  
<https://www.tahc.texas.gov/regs/entry.html#show>

FOR MORE INFORMATION PLEASE CONTACT

KEVIN MEEK 806.662.4372

Terry Tipps 806.896.0548

WHEELER COUNTY EXTENSION OFFICE 806.826.5243

# WHEELER COUNTY SWINE JACKPOT DECEMBER 10TH, 2022

Wheeler County Showbarn  
Wheeler, TX

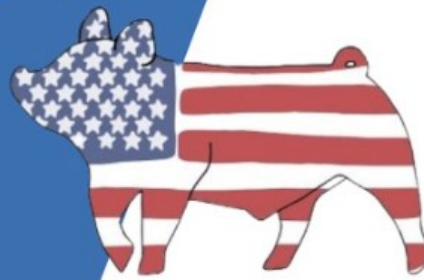
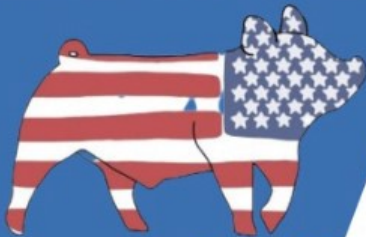
Barn Opens 4:00pm Friday  
Weight Cards Due: 9:00am Sat.  
Show Begins: 10am

Texas residents ONLY  
NO boars over 100 lbs  
Shavings for bedding ONLY  
Pens are first come first serve  
NO tack pens  
Showing out of trailer is acceptable-  
limited space to back up to barn.

**\$40/Head**

Showmanship \$10 @Gate  
Winner take ALL

**JUDGE: JASON FOOTE**



**GRAND**

**\$1,000+Buckle**

**RESERVE**

**\$500+Buckle**

**SHOWMANSHIP**

Pee-Wee--2nd and Under

JUNIOR: 3rd-7th Grade

SENIOR: 8th-12th Grade

**AWARDS FOR BREED,  
RES. BREED, & CLASS WINNERS**

**FOR MORE INFORMATION CONTACT**

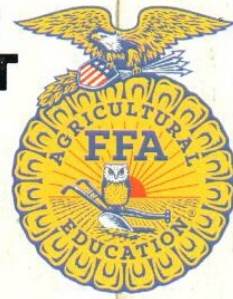
**JUSTIN JAMES:806.662.5535 DUSTIN POOL:806.584.7504**



# 4H/FFA PROGRAM



**SAVE 10% OFF  
YOUR PROJECT  
SUPPLIES  
EVERY TIME  
YOU SHOP AT  
GEBO'S**



**4-H/FFA MEMBERS CAN  
JOIN AT ANY KIOSK OR  
TEXT 4HFFA TO 72044**



By joining Gebo's Rewards Club, I agree to receive ongoing messages at the number provided. Consent is not required to purchase goods or services. Up to 4 msgs/mo. Reply HELP for help, STOP to cancel. Message & Data rates may apply. Ts & Cs / Privacy Policy @ www.viptextdeals.biz/terms

**GEBO'S IS PROUD TO SPONSOR STUDENTS INVOLVED IN 4H/FFA PROJECTS. WE BELIEVE THAT THE INTEGRITY, HONESTY, AND WORK ETHIC THAT THESE ORGANIZATIONS PROMOTE & INSPIRE IS CRITICAL IN CREATING FUTURE LEADERS AND RESPONSIBLE CITIZENS.**



**TO JOIN - STUDENTS (19 OR UNDER) CAN CHECK IN ON THE STORE KIOSK OR TEXT 4HFFA TO 72044 - THEY NEED TO FILL OUT THE ONLINE FORM COMPLETELY - ONCE REGISTERED, THEY CAN GET 10% OFF ITEMS FOR THEIR PROJECTS**

[Gebo's Facebook](#)

**Potter County 4-H Birthday Bash!!!**

**Happy Birthday to all the 4-H members celebrating their birthdays in December!!**



**Potter County 4-H**

*Cari Snider CEA - 4-H*

**[cari.snider@ag.tamu.edu](mailto:cari.snider@ag.tamu.edu)**

3301 SE 10th Ave

Amarillo, TX 79104

tel. 806.373.0713 fax. 806.373.7946

**Connect with  
us**



Cari Snider | 3301 SE 10th Ave, Amarillo, TX 79104 8063730713

[Unsubscribe \[pottercounty4h@gmail.com\]\(mailto:unsubscribe\_pottercounty4h@gmail.com\)](mailto:unsubscribe_pottercounty4h@gmail.com)

[Update Profile](#) | [Constant Contact Data  
Notice](#)

Sent by [cari.snider@ag.tamu.edu](mailto:cari.snider@ag.tamu.edu) powered by



Try email marketing for free today!